

**FLOORPLAN OPTIONS**

We personalise our floorplans. Talk to us about our huge range of ready-to-go design options.

**Facades available:**

Barrine, Mackay	
Blanche, Mckenzie	
<b>Overall home width</b>	<b>12.59m</b>
<b>Overall home length</b>	<b>17.75m</b>

Residence	216.4m <sup>2</sup>	23.3sq
Garage	36.6m <sup>2</sup>	3.9sq
Porch	3.3m <sup>2</sup>	0.4sq
<b>Total</b>	<b>256.2m<sup>2</sup></b>	<b>27.6sq</b>

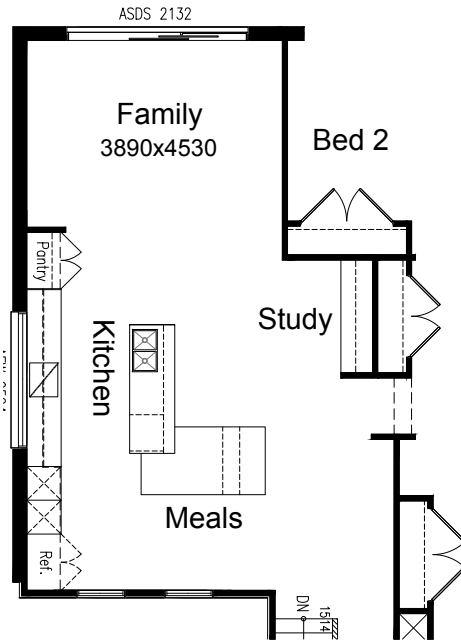
Listed details based on Barrine facade floorplan (illustrated)

\*Copyright conditions. All photos and illustrations are representative only. Floor plans and specifications may be varied by Burbank without notice, the dimensions are diagrammatic only and a Building Contract with final drawings will display correct dimensions and detail. All designs are the property of Burbank and must not be used, reproduced, copied or varied, wholly or in part without written permission from an authorised Burbank representative. Copyright Burbank Australia (NSW) Pty Ltd. ABN 88 610 822 770. NSW BL 295627C ACT BL 2016566.

**Call 13 BURBANK**  
**Visit [burbank.com.au](http://burbank.com.au)**

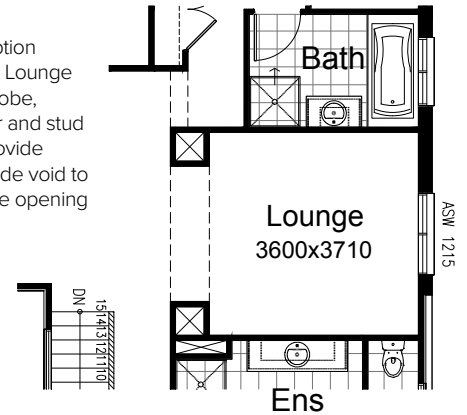
**OPTION K1**

Provide Kitchen and floor plan option by switching Family and Meals areas. Upgrade Kitchen includes 1200x2200mm built-in Meals bench with wine rack beneath, island bench with dishwasher provision, double wall oven, steam oven & microwave provisions, Refrigerator space, cooktop and retractable rangehood, fixed aluminum window to splashback. Replace ASD 2124 with ASDS 2132.



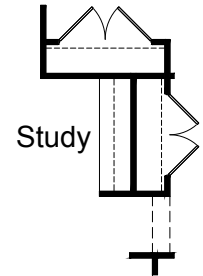
**OPTION IP2**

Provide floor plan option replacing Bed 4 with Lounge by removing built-in Robe, 820mm hinged door and stud and plaster walls. Provide matching 600mm wide void to create 2400mm wide opening with bulkhead over.



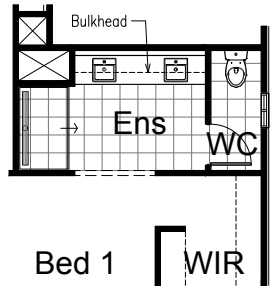
**OPTION IP3**

Provide Study upgrade option with 60mm built-in laminated bench top, 600mm overhead cupboard and 2No. 1320mm wide open shelves.



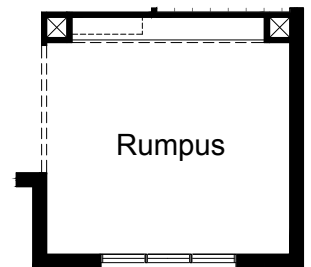
**OPTION ENS1**

Provide Ensuite upgrade option including 150mm(h)x300mm(w) bulkhead with downlights, 900x1500mm tiled shower base with strip waste, full width built-in vanity with 20mm stone bench top and double basins, feature tile between 2No. mirrors above basins, 90mm dwarf wall shelf above vanity also.



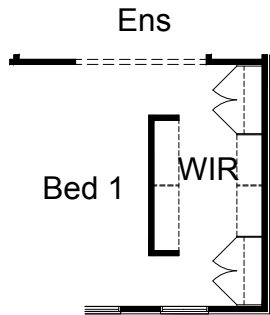
**OPTION IP4**

Provide Rumpus upgrade option including voids and bulkhead to create entertainment centre. Provide 2No. 60mm thick 1250mm wide shelves, 17mm laminated bench top with 4No. 600mm drawers and 3No. 700mm base cupboards beneath.



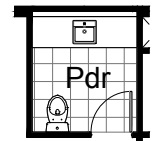
**OPTION IP1**

Provide Walk-in Robe upgrade option including 2No. 1200mm wide built-in closets with 5No. 450mm shelves and bulkhead over. 600mm shelf and hanging rail between the closets. 4No. 450mm shelves with hanging rails to Robe space opposite.



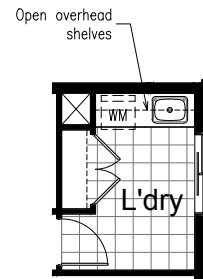
**OPTION IP5**

Provide Powder upgrade option by relocating the WC pan and providing built-in vanity with wall hung mixer and tap, 40mm stone bench top and 1No. 450mm drawer unit, 1No. 900mm base cupboard with feature doors and 1No. 450mm base cupboard with open shelves.



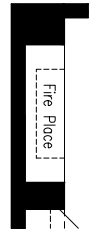
**OPTION LD1**

Provide Laundry upgrade option with 20mm stone bench top and built-in stainless steel trough, 900mm base cupboard, overhead open shelves with hanging rails.



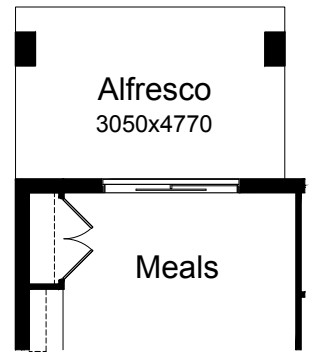
**OPTION IP6**

Provide built-in fire place with stone top and 150mm vertical cladding to Family.  
NOTE: Only available with Option K1



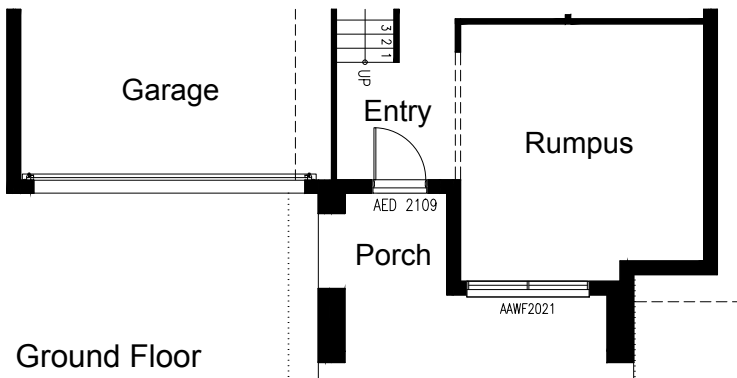
**OPTION EP2**

Provide 3050x4770mm Alfresco option to rear of dwelling including structural concrete slab, 2No. 590x350mm brickwork piers with roof above.  
Increases area by 14.55m<sup>2</sup>

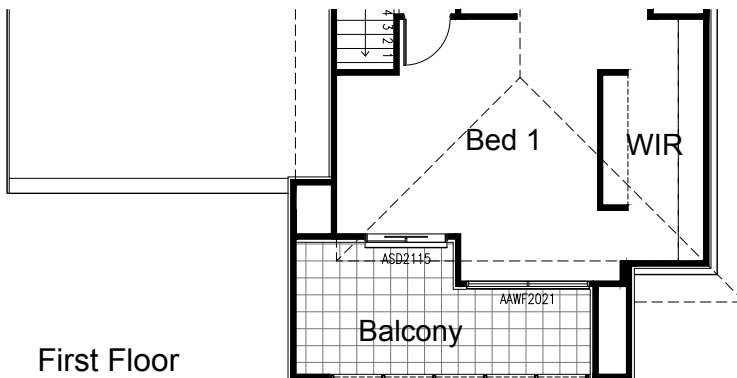


**OPTION EP1**

Provide Victoria facade upgrade option including:  
 - 920mm wide pivot hinge entry door  
 - 1No. 2057x2170mm aluminium awning window to Rumpus  
 - 1No. 2057x2170mm aluminium awning window to Bed 1  
 - 1No. 514x2410mm aluminium awning window to Family  
 - 1No. 2100x1450mm aluminium sliding door to Bed 1  
 - Full width balcony with stainless steel and glass panel balustrade with western red cedar cladding  
 - 1No. 470mm wide engaged brick pier with render finish  
 - 1No. 470mm wide feature brick pier  
 - Rendered brickwork to Rumpus and Porch  
 - Painted Scyon 'Stria' cladding to Bed 1 and Family including returns  
 - 25° roof pitch with Colorbond roof sheet.  
 Note: Only available with Victoria Facade



Ground Floor



First Floor